

21CENTURY 21.

Mountain Lifestyles

2123 Hendersonville Rd. Arden, NC

28704 South Office 828-684-2640

C21ml.com



"Don't Settle for Average"



CUSTOM FARM HOUSE with Hickory floors, granite counter tops, custom kitchen cabinets. Oak/Poplar/Maple & Walnut woods throughout home. Open kitchen/dining/FR. Covered back porch! Private level acreage . RV spot. Greenhouse. Outbuilding. Garden ready. Fruit trees. AHS home warranty. Peaceful mountain & farm living. \$319,900 Owen Fields (828)684-2640/777-5447 MLS# 340616 www.rewnc.net/587217



WELL MAINTAINED! Large lot in W. Asheville. Split BR & open floor plan. Newer appliances. Nice covered back deck over looks fenced yard. Workshop outbuilding with power. New metal roof in 2010. Other recent updates. Fenced yard welcomes garden space. \$154,000 Owen Fields (828)684-2640/777-5447 MLS# 3387333 www.rewnc.net/561187



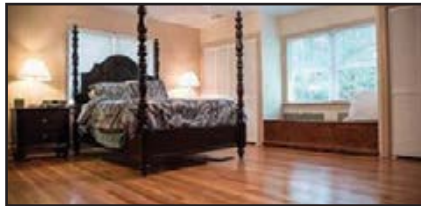
MOUNTAIN GETAWAY! Low maint. one level 800sf cabin, close to everything in Maggie Valley. Paved access. Cabin furnished for perfect rental! Hardwood floors, will have electric insert installed, 2 good size BR's & 2 BA's, stack washer/dryer, covered rocking chair porch with ramp access. \$117,000 Heather Weaver (828)684-2640/231-1630 MLS# 3397265 www.rewnc.net/540869



ONE LEVEL WITH brick exterior. Corner lot is .34 acre. 2BR, 1BA & approximately 1155sf. Covered porch, hwdw floors, level yard, Roberson School District, HP. \$184,900 Skip Dillingham (828) 684-2640/712-5336 MLS# 3361684 www.rewnc.net/541548



OVERLOOK MTNS from covered front porch. Antiques placed over generations staying for new generations. New keepers of the lodge need to love these mtns & our people. 11 rooms & 2 cabins. \$750,000 Heather Weaver (828) 684-2640/231-1630 MLS# 3265776 www.rewnc.net/670164



QUAINT COTTAGE meets modern farm house. Updated amenities while maintaining original antique charm. 2017 kitchen remodeling complete. Private outdoor area overlooks community pond. Includes 2 lots on 1 acre. \$418,700 Jason Nicolai (828) 684-2640/284-0723 MLS# 3315111 www.rewnc.net/722263



FRESH PAINT! Lots of BRs, BAs, & living space. 7 storage areas. Media room, sauna room, office/hobby spaces & bonus rooms. Oversized 2 car garage plus a half bath. 600sf of rear deck for. Established neighborhood. \$499,900 Martha Lowe (828) 684-2640/777-4365 MLS# 3298415 www.rewnc.net/620240



3.25 ACRES! Rushing stream. 2 wood burning FPs, 1 with insert. New stainless appliances, granite counters, wood floors in LR, DR & MBR. Tile floors in kitchen & lower level. Beautiful stone work on property. \$320,000 Debra Marshall (828) 684-2640/273-5305 MLS# 3289217 www.rewnc.net/688770