



# Sandra Purcell & Associates

96 West Main St, Brevard, NC 28712 • [www.SandraPurcell.com](http://www.SandraPurcell.com)

828.885.STOP (7867)

*Putting People and Properties Together Since 1984*



**STUNNING, ARCHITECT-DESIGNED JEWEL** with over 4 acres of serene, wooded landscape in the Glen Cannon community. 1st time on the market offering with 4B/3B, mountain views, wall of windows, cathedral ceilings & expansive outdoor living. Walkout basement offers space for guest or a cozy retreat. Explore your own walking trails & connect to adjoining GC green-space, a waterfall and creek. **MLS 4319700 \$825,000**



**CHARMING, ONE-LEVEL HOME** with vaulted ceilings, wood floors, 3B/2B, split bedroom plan, spacious back deck and more! Within minutes to downtown Brevard and access around the corner to the famed Ecusta Trail bike/hike path. Come find your next home or getaway! Outdoor enthusiasts will relish the proximity to endless nature exploration. Brevard one of America's Coolest Small Towns. **MLS 4317650 \$430,000**



**CUSTOM-BUILT ARTS & CRAFTS 4 BR 3.5 BA** home. An open floor plan features a kitchen with an island, granite countertops, a coffee center, and a living room with stunning fireplace. Primary BR has a custom walk-in closet and tiled bath. Step outside to the expansive back deck overlooking a fenced backyard. 2-car garage includes extra storage. Nestled within the Brevard city limits. **MLS 4263317 \$850,000**



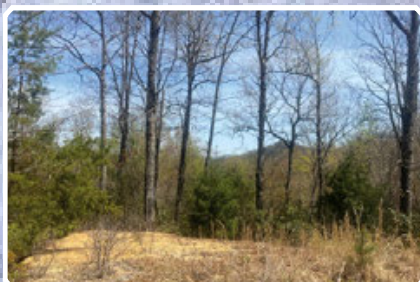
**CONNESTEE FALLS DREAM HOME** nestled off of the 14th fairway. Many updates including a new roof in July 2025, home boasts an abundance of natural light in its open-concept living spaces. The lower level is equipped with a second kitchen & fireplace. As a part of the gated CF community, you'll have access to premier amenities, including lakes, clubhouse, sports courts, a pool, and more. **MLS 4281627 \$1,275,000**



**SCENIC VIEWS FROM GLEN CANNON, 2 BR 2 BA** condo with vaulted ceilings and natural light. Enjoy cozy evenings by the fireplace or unwind on the screened back porch. A spacious bonus room in the basement offers endless possibilities. Covered carport with storage shed. Property combines comfort and style, making it a perfect retreat. Located just a few minutes from downtown Brevard. **MLS 4276729 \$389,900**



**MOUNTAIN VIEWS FROM 2/2 CONDO** just 10 minutes from downtown Brevard. Upper-level condo with new oak floors, new fireplace, remodeled tiled bathrooms (2012). Daydream, read and entertain on the Trex deck that looks out on the Pisgah mountains to the west, a mesmerizing view. Garden in the backyard. Close to Brevard's famous hiking, art, breweries, & music. **MLS 4275029 \$369,900**



**BEAUTIFUL 1.5-ACRE PARCEL** in the Sylvan Heights community, 15 minutes from downtown Brevard. The homesite is already cleared and ready for your vision, with long-range views of the Blue Ridge Mtns. Enjoy private neighborhood amenities including scenic trails and a tranquil pond. A rare opportunity to own a ready-to-go lot in one of Brevard's most picturesque mountain communities. **MLS 4248485 \$75,000**



**SHERWOOD FOREST SANCTUARY 2 BR 3.5 BA, 3,000 sqft.** home is nestled in the ferns & hardwoods. Open flow design seamlessly merges modern luxury with timeless warmth. Rear deck leads to your personal oasis for al fresco dining or drinks in the treetops in your screened porch. Walkout lower level includes family room, and exercise studio. **MLS 4316894 \$699,900**



**3 BR 2.5 BA GLEN CANNON CONDO** with stunning mountain views! Inside find vaulted ceilings and a cozy fireplace. Enjoy the serenity of nature from your large porch, perfect for morning or evening relaxation. This low maintenance gem is perfect for year-round living or as a seasonal escape. Minutes from downtown Brevard and it's charming shops & dining or adventures at nearby Pisgah Nat'l Forest. **MLS 4267637 \$419,000**



Sandra Purcell  
CRS, GRI  
828.553.1667  
[spurcell@comporium.net](mailto:spurcell@comporium.net)



Jeremy Purcell  
CRS, CRB  
828.553.2236  
[jeremy@jerempurcell.com](mailto:jeremy@jerempurcell.com)



Bob Purcell  
GRI, e-PRO  
828.553.1666  
[bpurcell@comporium.net](mailto:bpurcell@comporium.net)



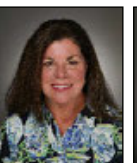
Pam Fuhrer  
828.553.8607  
[pjgoodhue@hotmail.com](mailto:pjgoodhue@hotmail.com)



Rita Bright  
828.551.9313  
[ritab@sandrapurcell.com](mailto:ritab@sandrapurcell.com)



Roger Bright  
828.243.2477  
[rogerb@sandrapurcell.com](mailto:rogerb@sandrapurcell.com)



Kimberly Wilson  
813.716.0467  
[kdwl1965@gmail.com](mailto:kdwl1965@gmail.com)



Donna McBrite  
919.753.7976  
[donnamcbrite@yahoo.com](mailto:donnamcbrite@yahoo.com)



April Lee  
828.553.0957  
[april@sandrapurcell.com](mailto:april@sandrapurcell.com)



Devon Brodmyer  
678.677.2388  
[devon@sandrapurcell.com](mailto:devon@sandrapurcell.com)