



336 Rockwood Road #106 | Arden, NC 28704  
 828-575-2337 | Toll-Free: 888-895-0297

Start your home search here [www.SearchAshevilleRealEstate.com](http://www.SearchAshevilleRealEstate.com)

**Debbie Leon**  
 Realtor® Owner / Broker  
 828-273-4887



**BEAUTIFUL PROPERTY, PERFECT** for large family, or B&B Business or Air B&B, multiple possible uses in a private park like setting. 4 bedrooms all with full en suite bathrooms (2 up 2 down) plus office/bonus room, 2 great rooms with fireplace, large eat in kitchen opens onto large dining area, covered screen porch on top level, rear open patio off kitchen is perfect for BBQ, detached 2 car carport. Two driveways, enter home from upper patio level through mud room into kitchen or from lower main entrance. This property offers so many possible uses, show and bring offer. Included is separate pin 969492152 lot .72 ac total land 4.23 ac. Home warranty provided. MLS:3411820 \$349,900 [www.rewnc.net/584796](http://www.rewnc.net/584796) Call Sylvia Pardo at 828-713-6907



**PERMANENT VACATION!** This home features a private, covered back porch with an outdoor kitchen area, Bose surround sound, & pool. Lots of flowers, fruit trees, blue berry bushes, and grape vines. The interior has H/W floors, 9'ceilings, granite, stainless appliances, double ovens, walk in pantry, 2 story rock fireplace, solid mahogany front door, and tile shower. Downstairs features theater room, full bathroom, bedroom with an outside entrance, over sized garage with sink, bonus "man cave" area. MLS:3409721 \$495,900 [www.rewnc.net/594742](http://www.rewnc.net/594742) Call Sheila Kilby at (828-775-4086



**A MUST SEE! BEAUTIFUL.** Completely updated spacious home. Move in ready with stunning new Bamboo floors. It features 3 bedrooms and 2/1 baths, a huge newly finished media/man cave complete with a mini fridge in the walkout basement. It has a laundry room, pantry and a 2 car garage. This home is immaculate. This house is one of the largest in the community. Only 10 minutes to DOWNTOWN Asheville. Plenty of space to entertain family and friends. Scenic Bluff has access to the pool/club-house for an additional fee. \$339,000 MLS:3430055 [www.rewnc.net/601689](http://www.rewnc.net/601689) Call Holly Penland at 828.691.5005



**COME CHECK OUT** this fantastic and unique single level home with finished basement and ADA compliant bathroom. Enjoy a spacious 2-car garage as well as PLENTY of storage space in the basement. Hardwood floors throughout and beautiful skylights light up this very well maintained home. Natural Gas Fireplace and auxiliary heat for the colder months with central air and heat pump for efficiency. You will fall in love with the mature landscape as well as the private enclosed porch and open deck facing a wooded lot with the distant sounds of a creek down below. Quiet and wonderful neighborhood settled in the Davenport Mountain area close to everything Hendersonville has to offer. \$317,900 MLS:3384885 [www.rewnc.net/512434](http://www.rewnc.net/512434) Call Shane Dickerson at 828.275.3894



**PRICED \$177,000 BELOW** appraisal, this town home has it all. Located at beautiful community of Wolf Laurel, you will feel at home as soon as you walk in the door. The wide open floor plan will take your breath away. 3 fireplaces, custom cabinets, granite counter tops, commercial grade appliances along with the two huge decks will make you never want to leave! Wolf Laurel also has golf, tennis, pool, dining, and more! Come see how great mountain living can be. \$397,500 MLS:3297195 [www.rewnc.net/718669](http://www.rewnc.net/718669) Call David Reynolds at 828-551-1997



**A VERY UNIQUE RARE FIND** in this classic 1925 historic arts and crafts home with a huge private 1.67 lot with a old tobacco barn. All windows were replaced in 2006 (per seller). The roof was replaced in 2001 (per seller). Beautiful vintage original 1925 bathtub. Beautiful high ceilings and a large living room. A previous owner began and almost completed the attic for additional square footage or possibly a separate rental unit. An absolute must see. Huge potential. Super convenient location, right off Leicester Hwy which is in the process of being widened. Only 20 minutes to DOWNTOWN ASHEVILLE. Heat pump is not working, seller has gotten an estimate of \$4,200 on the cost to repair it. Home also has propane heat. Home sold as is. No mobile homes per deed. Agent is related to seller. MLS:3422697 \$249,900 [www.rewnc.net/601014](http://www.rewnc.net/601014) Call Holly Penland at 828.691.5005



**WELCOME TO THE HEART OF DOWNTOWN ASHEVILLE!** This luxury 855 SF condo offers an up-to-date kitchen area and wonderful bamboo floors throughout its open spacious floor plan. Enjoy access to a community green space and a roof top terrace boasting incredible long range views as well as the largest parking space in the secure ground level parking garage. With lots of built-in storage space, loft style ceilings and romantic lighting this affordable condo is priced to sell! MOVE IN TODAY! \$410,000 MLS:3396528 [www.rewnc.net/547421](http://www.rewnc.net/547421) Call Eddie Ramp 828.707.5642



**THIS DELIGHTFUL BUNGALOW** is tucked away in the woods yet offers privacy as well as convenience to all that South Asheville has to offer. This 726 square foot home satisfies the desire for tiny living but allows for an open floor plan, sizeable bedrooms, and a full bathroom. The home boasts tile floors throughout, skylights in both the bathroom and main living area, a metal roof, and a partially fenced yard. Don't miss out on the gem that is priced to sell! MLS:3410502 \$149,000 [www.rewnc.net/555221](http://www.rewnc.net/555221) Call Debbie Leon at 828-273-4887



**THIS 1.71 ACRE PARTIALLY-WOODED LOT** boasts both long-range mountain views and endless possibilities! Underground utilities and attention to detail down to the stone stop signs transport you into the heart of our beautiful Blue Ridge Mountains. Convenient to Lake Lure and all that Chimney Rock has to offer, you will not be disappointed making your everyday life here an adventure! MLS:3427691 \$49,000 [www.rewnc.net/540660](http://www.rewnc.net/540660) Call Amanda Mandeville at 828-215-7904



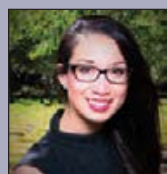
**THIS ONE-OF-A-KIND** corner lot boasts both open, long-range mountain views and unconstrained building sites. Underground utilities and beautiful detail down to the stone stop signs will leave you feeling truly transported into the heart of the beautiful Blue Ridge Mountains. This site is mostly cleared yet partially wooded with endless possibilities. Only 2.5 miles to beautiful Lake Lure, it's the perfect place to make your everyday life an adventure. \$39,000 MLS:3427694 [www.rewnc.net/518994](http://www.rewnc.net/518994) Call Amanda Mandeville at 828-215-7904



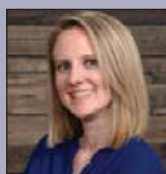
**THIS LOVELY HOME** on .7 acres boasts custom-built barn doors in the living area, a gas fireplace, large bedrooms, a huge upstairs bonus area, ample storage, and a spectacular long-range view of the beautiful Blue Ridge Mountains. This is country living at its best but with the added convenience to the outdoor adventures of the Blue Ridge Parkway. Only 15 minutes to the heart of vibrant West Asheville, you can relax away from it all or easily enjoy all that Asheville has to offer. We welcome you to come see for yourself! \$239,000 MLS:3398584 [www.rewnc.net/574559](http://www.rewnc.net/574559) Call Amanda Mandeville at 828-215-7904



**NEW CONSTRUCTION IN WOODFIN.** Located near the coming Woodin River Park. Located 5 minutes from Downtown Asheville and Biking distance to Downtown, UNCA, The French Broad River and The River Arts District. Granite counters, hardwood floors, upgraded fixtures and lighting, covered front porch and 9 ft ceiling on the main level. Make this your new home, 2nd home with rental, or buy for your student at UNCA. MLS:3411671 \$269,000 [www.rewnc.net/600696](http://www.rewnc.net/600696) Call Lee Stowe at 828.216.5111



Tiffanie Robertson  
P Broker  
714.422.6926



Kathleen Marks  
Broker  
828.458.8378



Natalya Gundorin  
Broker  
828.337.4312



Amanda Mandeville  
P Broker  
828.215.7904



David Reynolds  
Broker  
828.551.1997



Nichelle Nichols  
P Broker  
828.777.0201



Don Rongstad  
Broker  
828.337.5788



Sylvia Spardo  
Broker  
828.713.6907



Eddie Ramp  
Broker  
828.707.5642



Bree McMahon  
P Broker  
407.406.0707