

# Town and Mountain REALTY

261 Asheland Avenue, Asheville, NC 28801

Phone: 828-232-2879 Email: [info@townandmountain.com](mailto:info@townandmountain.com)



**3 BR END UNIT CONDO** Private back porch looks out over lush fields & creek. Main floor office & gas fireplace. Spacious & charming home in Crowfields - premier 55+ community in South Asheville. Clubhouse with heated pool, community garden plots, walking trails along 2 ponds & Dingle Creek. MLS:3287064 \$260,000 [www.rewnc.net/679651](http://www.rewnc.net/679651) Call Susan Young at (828) 273-9108



**SACRED MOUNTAIN COMMUNITY** Beautiful views of Mt. Pisgah, Blue Ridge Parkway, hiking trails, privacy, onsite Waldorf influenced school & like-minded community. Passive solar, green-built home by Blue Ridge Energy Systems in serene setting. Built with efficiency in mind, has a wonderful rustic modern feel. MLS:3289452 \$379,000 [www.rewnc.net/689626](http://www.rewnc.net/689626) Call Patrick Miljour at 828-216-3105



**EXPANSIVE ESTATE PROPERTY** Secluded acreage w/ long range mountain views. Last privately owned parcel entering National Forest, adjoining USNFS land. 600ft from door is the Appalachian Trail. Outdoor hot tub. Lower floor: outside entrance, 2nd living room & kitchen. Private pond, waterfall, & large deck. MLS:3285925 \$374,500 [www.rewnc.net/685765](http://www.rewnc.net/685765) Call Andy Ball at (828) 406-2408



**OH THE POSSIBILITIES!** 1-level living in lovely park like setting engulfs this sprawling brick 4BR/3BA home in Woodland Hills neighborhood. Sunroom with views of flowering foliage, gas log FP, full basement for & 2car garage. Roof new in 2007 and Heat pump new in 2012. Tremendous value with this one! MLS:3283494 \$379,000 [www.rewnc.net/684656](http://www.rewnc.net/684656) Call Sean Mack at (828) 301-9582



On the Cover

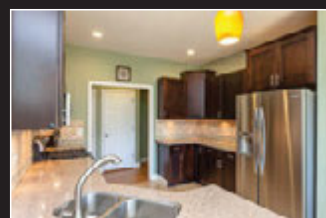
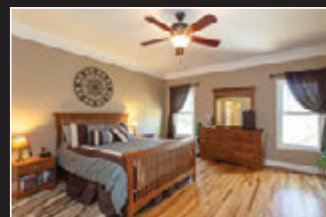
29 Lancaster Lane Weaverville, NC 28787

This beautiful spacious home on a private lot in a quiet neighborhood has everything and more!

MLS # 3286453

Offered at \$457,500

- ± 1.0 Acre Lot | ± 3758 SqFt Home
- 4 Bedrooms + 2 Bonus Rooms
- 3 Bathrooms
- Hidden Theater Room
- Open Family/dining with Gas Fireplace & Hardwood Floors
- Stainless/granite/backsplash Kitchen with Breakfast Bar
- Split Bedroom Layout & Master on Main
- Tons of Storage
- 2BR/1BA Guest Suite with Kitchenette in Daylight Basement with Wet Bar & More
- Upper and Lower Level Decks
- 2 Car Garage
- Quiet Street & Neighborhood
- Big Backyard with Playset
- Topped off with Mountain Views



Luiz Leonetti, REALTOR®  
828.575.4428  
[luiz@luizleonetti.com](mailto:luiz@luizleonetti.com)

Jessi Leonetti, REALTOR®  
828.676.8451  
[jessi@leonettigroup.com](mailto:jessi@leonettigroup.com)



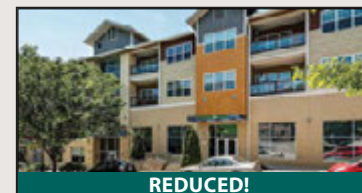
Start your search today at: [www.townandmountain.com](http://www.townandmountain.com)



**PICTURESQUE PASTORAL SETTING** One of a kind beautifully updated farmhouse/ranch. Panoramic views, white picket fencing, sprawling 1.81 acre homestead. Open floorplan, Kitchen w/SS appliances, & dining area. Vaulted ceilings, fireplace with gas logs, Master on Main, full basement w/garage & privacy galore! MLS:3284403 \$300,000 [www.rewnc.net/685671](http://www.rewnc.net/685671) Call Mike Miller at (828) 712-9052



**RARE OPPORTUNITY 6.8 ACRE FARM** Located in the beautiful Sandy Mush community of Leicester. 180+ degrees of long range views from amazing Custom built 4BR/2.5BA home & plumbed for future basement BA. Geo-thermal heating system in walk-out basement ready to finish. Several large out-buildings/barns - must see! MLS:3287047 \$589,000 [www.rewnc.net/687491](http://www.rewnc.net/687491) Call Michael Keleher at (828) 772-4611



REDUCED!

**DOWNTOWN ASHEVILLE CONDO** Secure Building. Open floor plan, granite counters in kitchen and bath, hardwood floors throughout. Enjoy the view on the covered deck. Park in the secure garage with storage available. Small exercise room on the 3rd floor. HVAC was replaced in 2016. MLS:3280014 \$265,000 [www.rewnc.net/681630](http://www.rewnc.net/681630) Call Hilary Paradise at (828) 230-7787



**3BR/4BA HOME ON 1+ ACRE** Spacious home on quiet creekside land. Open floorplan & 9ft ceilings. Fenced yard & garden spot. Double wall ovens, quartz countertops & ss appliances. Master BR w/gas log fireplace, 2BA, & walk-in closets. 2car garage, basement & more! Available w/2nd home see MLS:3289026. \$399,500 MLS:3289004 [www.rewnc.net/674038](http://www.rewnc.net/674038) Call Jessica Jackson at (828) 337-5898

